

# COMMUTER

## Housing 2025-2026





# TABLE of Contents

---

<b>Contact Information .....</b>	<b>3</b>
 <b>Commuter Housing Information.....</b>	<b>3-4</b>
Commuter Housing Overview .....	3
Making A Reservation.....	4
Billing .....	4
Parking Policies .....	4
Magnolia Kitchen .....	4
 <b>Policies &amp; Regulations.....</b>	<b>5</b>
 <b>Students Traveling with Family .....</b>	<b>6- 9</b>
Flaherty Farms Apartments .....	6- 9
 <b>Students Traveling without Family .....</b>	<b>10-12</b>
McDowell Townhouses .....	10-11
Hampton Inn .....	12



## CONTACT Housing

---

**Phone:** 919-761-2400

**Email:** [housing@sebts.edu](mailto:housing@sebts.edu)

**Office Hours:**

Monday - Thursday

8:00 a.m. - 5:00 p.m.

Friday

8:00 a.m. to 4:00 p.m.

## COMMUTER Overview

---

The Housing Office of Southeastern Baptist Theological Seminary seeks to provide adequate, affordable, safe, and comfortable housing for all God-called men and women who come to Southeastern to prepare for Christian ministries throughout the world.

Southeastern offers commuter housing for commuting, hybrid, and intensive students. Whether you stay one night or two weeks, we have affordable options to help you.

## MAKING *a* Reservation

---

Reservation requests must be made at least 5 business days in advance of your planned stay.

Make a reservation at [sebts.edu/housing](https://sebts.edu/housing).

## BILLING

---

The rent will be charged to the applicant's seminary account, which is payable in the Accounting Services Office.

## PARKING Policies

---

- Flaherty Farms — One designated parking space for each apartment
- McDowell Townhouses - One designated parking space for each apartment
- Hampton Inn—Parking is available at the hotel
- Campus—All students attending class on SEBTS campus should register for a parking permit by signing into CampusNet and following the link under the Security tab. If you have any further questions about whether to register for a parking permit or not, please contact the office under which you are studying.



## MAGNOLIA Kitchen

---

Make sure you check out Magnolia Kitchen while you are on campus!

Magnolia Kitchen serves new and delicious meals all week long. Visit throughout the day to enjoy a snack or a full meal.

Head to [sebts.edu/student-life/dining/](https://sebts.edu/student-life/dining/) to find out more information and for this week's menu.



# COMMUTER HOUSING

## Policies & Regulations

---

Housing policies and regulations are devised to be consistent with Southeastern's commitment not only to its students but also to the Southern Baptist Convention and the people who support it. Their primary aim is to help maintain a comfortable setting conducive to learning while providing as much privacy as possible in a shared environment.

All seminary housing students are guided by specific policies and regulations.

*Commuters must comply with all Housing Policies and Regulations. Any violation of these rules may result in immediate eviction from the premises.*

1. Use or possession of e-cigarettes (including "vapes"), tobacco, or alcoholic beverages; or the misuse of prescription drugs by the student and/or the student's guests in the housing areas is prohibited.
2. No pets are allowed in any of the commuter housing areas.
3. Quiet hours are to be observed. Quiet hours are posted in in the dorm.
4. Singles may visit singles of the opposite sex in their apartment between the hours of 10:00 a.m. and 11:00 p.m. Sunday through Thursday, and between the hours of 10:00 a.m. and 12:00 midnight Friday and Saturday, provided there are at least three people in the apartment at all times and no roommates object. Visitors of the opposite sex are not permitted in dorm rooms.
5. All needed repairs or requests for maintenance services are to be referred to the Housing Office at 919-761-2400. (To report a maintenance emergency after hours, call 919-369-1781.)
6. Furniture is not to be rearranged.
7. No alterations, additions, or improvements shall be made to the seminary property.
8. Please lock the door when you leave.
9. Personal items are not to be left in housing after check-out. Any items left behind will be removed and the applicant's account will be charged a fine of \$50. The Seminary is not responsible for items of value left behind.
10. The occupant is liable for damage to the seminary apartment caused by the occupant, the occupant's family, or guests.
11. The seminary insurance program does not include coverage for personal belongings. All personal items placed or stored on the premises are at the risk of the Occupant.
12. The seminary reserves the right to have authorized staff and/or approved contractors make physical inspections and/or perform routine or special services to property as often as is deemed necessary by the Director of Housing. Students are required to give access in a timely manner as requested by such workers.
13. Anything that is determined to be a nuisance, hazard, potential hazard, or considered to be in direct violation of the Housing Agreement by the Director of Housing will be subject to immediate corrective action.
14. Please note that no firearms are permitted in seminary housing.

# STUDENTS TRAVELING WITH FAMILY

## Flaherty Farms Apartments

---

**Check in:** 11:00 a.m.

**Check out:** 10:00 a.m.

### Cost

- 1-9 consecutive nights: \$77 per night
- 10-14 consecutive nights: \$700 flat rate
- 15-19 consecutive nights: \$1,100 flat rate
- 20-31 consecutive nights: \$1,500 flat rate

### Limitations

- Family commuter housing is designed primarily to assist students who commute to campus with their family from some distance and need lodging related to classes in which they are enrolled. Due to limited space, reservation requests must be made at least five business days in advance of your planned stay.
- Also, please be aware that if plans change and a student comes alone without his/her family, the student needs to notify the Housing Office before his/her arrival. Since we have a very limited number of family commuter apartments, it is important that we keep them available for students coming with their families. We have other commuter options for students who commute to campus alone.
- Current students living in campus housing who have guests coming to visit are welcome to reserve one commuter apartment per event (i.e. wedding, new baby, etc.). Multiple students are not permitted to reserve commuter apartments for the same event. If we still have unassigned commuter apartments within three days of an event, the Housing Office will consider making a second apartment available for rent. Please check with the Housing Office for availability at that time.
- For non-academic stays, confirmation will be given five business days prior to the planned stay to ensure academic needs are met.





# FLAHERTY FARMS

## Apartments

---

### Amenities

- 2 bedroom, 2 bath apartment furnished with a queen bed, two twin beds, nightstands, dressers, living room furniture, and dining room furniture.
- There is a kitchen with a stove, microwave, refrigerator, and dishwasher.
- Wireless internet is provided.
- Cookware, dishes, towels, linens, and pillows are not furnished.
- Television and phone access are not provided.

### Cancellation Policy

To forgo all rent charges, notice must be given in writing to the Housing Office by the end of the last business day prior to the night reserved.

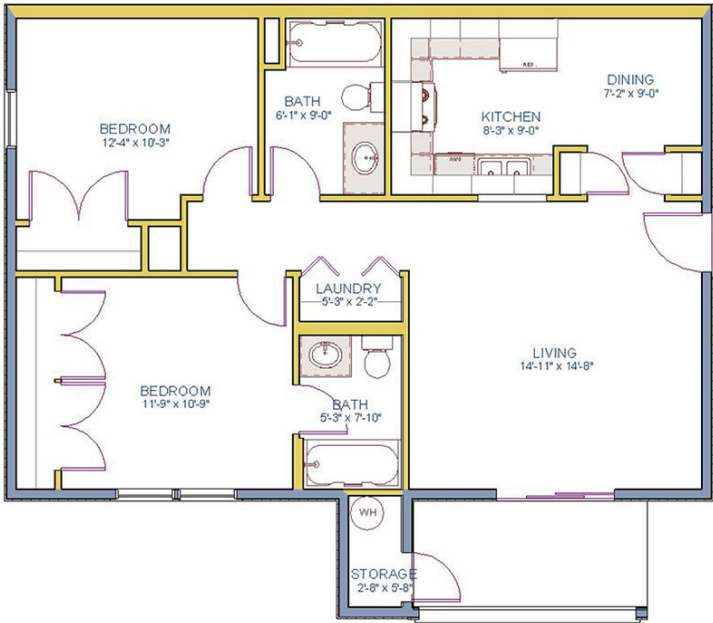
### Billing

The rent will be charged to the applicant's seminary account, which is payable in the Accounting Services Office. Non-student applicants, when approved by the Director of Housing, are required to pay their rent in advance of their stay at the Housing Office.

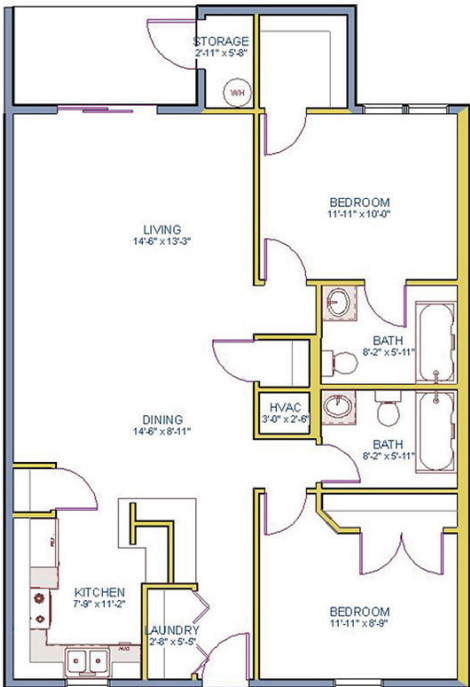


# FLAHERTY FARMS

## Apartments



2-BEDROOM SMALL / 860 SQ. FT.



2-BEDROOM LARGE / 960 SQ. FT.



# FLAHERTY FARMS

## Apartments



### Main Campus

1. Lolley Hall
2. Bostwick Hall
3. Goldston Hall



# STUDENTS TRAVELING WITHOUT FAMILY

## McDowell Townhouses

**Check in:** 11:00 a.m.

**Check out:** 10:00 a.m.

### Cost (Shared Room)

- 1-5 consecutive night stay: \$61 per night per person
- 6-15 consecutive night stay: \$350 flat rate per person
- 16-21 consecutive night stay: \$500 flat rate per person
- 22-31 consecutive night stay: \$650 flat rate per person

### Cancellation Policy

To forgo all rent charges, notice must be given in writing to the Housing Office by the end of the last business day prior to the night reserved.

## DORM STYLE Apartment

### General Information

Availability is limited and only students enrolled in the current semester are eligible to make reservations. Reservation requests must be made to the housing office at least 5 business days in advance of your planned stay. Apartment will be shared with three other commuting students. Pets are not permitted. Rent will be charged to the applicant's seminary account, which is payable in the Accounting Services Office.

Note: Handicap accessible accommodations are available on a limited basis. Applications for accessible commuter housing should be submitted at least 45 days in advance of your planned stay. Linens, cookware, and washer/dryer are provided in accessible dorm commuter housing.

### Amenities

- Each apartment is furnished with two sets of bunk beds and four desks.
- There is one bathroom.
- There is a kitchen with a stove, refrigerator, and microwave.
- Cookware, dishes, towels, linens, and pillows are not furnished.
- Wireless internet is provided.
- A washer and dryer are provided.



**2 BEDROOM / 850 SQ. FT.**





# McDOWELL Townhouses



## **Main Campus**

1. Lolley Hall
2. Bostwick Hall
3. Goldston Hall



# STUDENTS TRAVELING WITHOUT FAMILY

## Hampton Inn Hotel

---



### Address

12318 Wake Union Church Road,  
Wake Forest, NC 27587  
Phone: 919-554-0222

Southeastern partners with the Hampton Inn of Wake Forest to provide a discounted rate for students who book with them during commuter visits. Students must be enrolled in the current semester to qualify for the discounted rate.

Please note, students who choose this option will pay for their room at the Hampton Inn at the discounted SEBTS rate.







**Southeastern**  
**Baptist Theological Seminary**

**Housing Office**

P.O. Box 1889

244 N. Wingate Street

Wake Forest, NC 27587-1889

Phone: 919-761-2400

*[housing@sebs.edu](mailto:housing@sebs.edu) | [sebs.edu/housing](http://sebs.edu/housing)*